

INTRODUCTION

WHAT IS IT?

The Tower Tube is a tool kit of resource materials designed to enhance and extend visits to The Skyscraper Museum's exhibitions and programs. Primary-source materials and this user guide complement the Museum visit and support classroom instruction on the particular social studies concepts and themes:

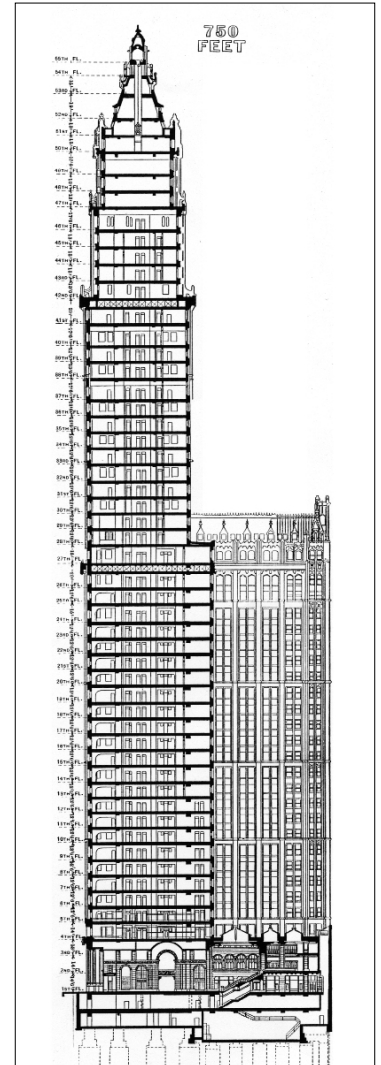
- New York City history
- Skyscrapers and the development of the urban environment
- Community and neighborhood exploration

WHAT'S INSIDE?

The Tower Tube contains reproductions of historic images showing New York City skyscrapers, streets, and skylines. These resources—including **photographs**, **drawings**, and **maps**—represent a selection of the Museum's rare artifacts that tell the story of skyscrapers and their unique place in the history and life of cities like New York.

The Tower Tube includes:

- 14 enlarged images from The Skyscraper Museum collection
- User Guide with comprehensive information about each resource
- Teaching strategies for object-based inquiry
- Suggested activities for K-6 lessons
- Connections to NY State Learning Standards in Social Studies



WOOLWORTH BUILDING
Section Drawing & Postcard

